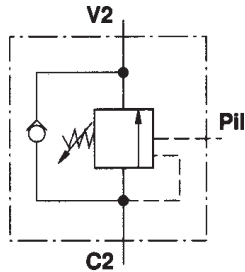
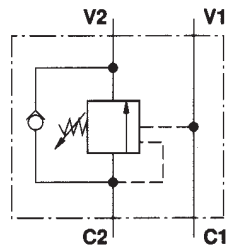


**OVERCENTRE VALVES**



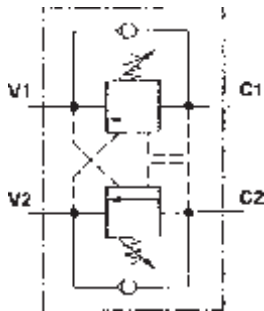
**SINGLE OVERCENTRE PILOT OVCSE**

PART NUMBER	C2 (BSPP)	V2 (BSPP)	PILOT (BSPP)	MAX Lts.	PILOT RATIO	MAX PRESS. (Bar)
OVCSE-12	1/2"	1/2"	1/4"	60	4.25/1	280



**SINGLE OVERCENTRE INLINE OVCSEL**

PART NUMBER	C1 (BSPP)	C2 (BSPP)	V1 (BSPP)	V2 (BSPP)	MAX Lts.	PILOT RATIO	MAX PRESS. (Bar)
OVCSEL-12	1/2"	1/2"	1/2"	1/2"	60	4.25/1	280



**DUAL OVERCENTRE INLINE OVCDEL**

PART NUMBER	C1 (BSPP)	C2 (BSPP)	V1 (BSPP)	V2 (BSPP)	MAX Lts.	PILOT RATIO	MAX PRESS. (Bar)
OVCDEL-12	1/2"	1/2"	1/2"	1/2"	60	4.25/1	280
OVCDEL-34	3/4"	3/4"	3/4"	3/4"	100	4.25/1	280