



APPLICATION DATA SHEET VERTICAL SPLIT SHAFT

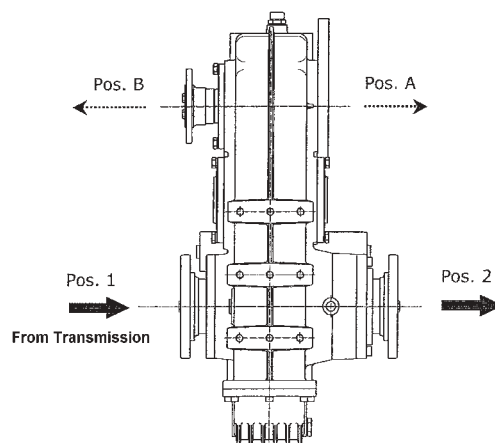
Company:	Telephone:
Contact:	Fax:
Application Details: Truck Make and Model	
Type of Operation	
Duration of operation (hrs/day):	
Minumum Ambient Temp:	Maximum Ambient Temp:

Engine/Transmission Details: Model Code		
Ratio of the 1st gear:		
Max Engine Power (Kw)	@	Rpm
Max Engine Torque (Nm)	@	Rpm
Max Engine RPM	@	Rpm

Split Shaft Unit Requirement					
Pos.A	Kw @	Rpm	Pos.B	Kw @	Rpm

Outputs Required (List desired output types - Flange or Pump Mounts Detail)	
Pos 1 Spicer : 1600 / 1700 / 1800	Pos 2 Spicer : 1600 / 1700 / 1800
Pos A Output :	Shift Type : Direct or Air or Clutch
Pos B Output :	Shift Type : Direct or Air or Clutch

Optional Items			
Rubber Vibration Mounts		External Oil Level Indicator	
Cooling Units		Speed Sensor Kit	





APPLICATION DATA SHEET HORIZONTAL SPLIT SHAFT

Company:	Telephone:
Contact:	Fax:
Application Details: Truck Make and Model	
Type of Operation	
Duration of operation (hrs/day):	
Minumum Ambient Temp:	Maximum Ambient Temp:

Engine/Transmission Details: Model Code		
Ratio of the 1st gear:		
Max Engine Power (Kw)	@	Rpm
Max Engine Torque (Nm)	@	Rpm
Max Engine RPM	@	Rpm

Split Shaft Unit Requirement					
Pos.A	Kw	@	Rpm	Pos.B	Kw @ Rpm
Pos.C	Kw	@	Rpm	Pos.D	Kw @ Rpm

Outputs Required (List desired output types - Flange or Pump Mounts Detail)	
Pos 1 Spicer : 1600 / 1700 / 1800	Pos 2 Spicer : 1600 / 1700 / 1800
Pos A Output :	Shift Type : Direct or Air or Clutch
Pos B Output :	Shift Type : Direct or Air or Clutch
Pos C Output :	Shift Type : Direct or Air or Clutch
Pos D Output :	Shift Type : Direct or Air or Clutch

Optional Items:			
Rubber Vibration Mounts		External Oil Level Indicator	
Cooling Units		Speed Sensor Kit	

