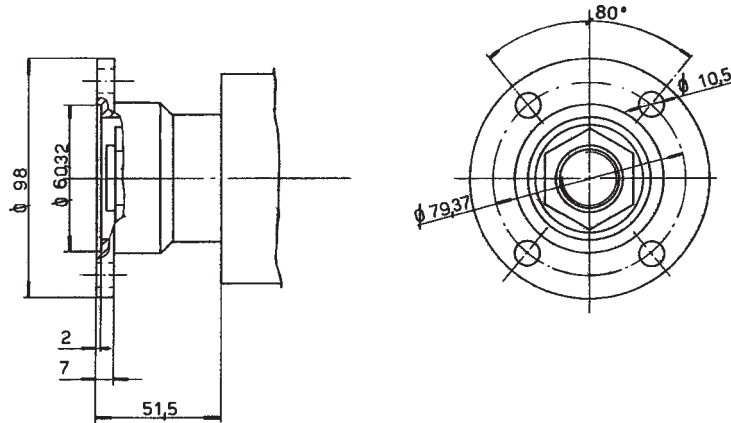
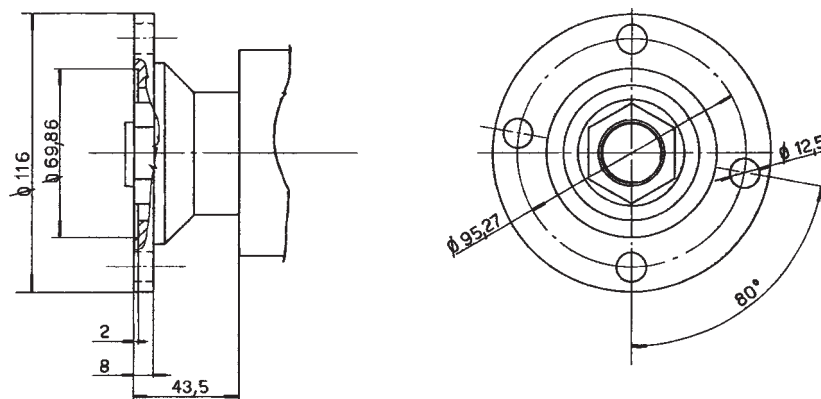


FLANGES FOR REMOTE TRANSMISSION FOR 3.2.58.9 SPLIT-SHAFT UNIT ONLY

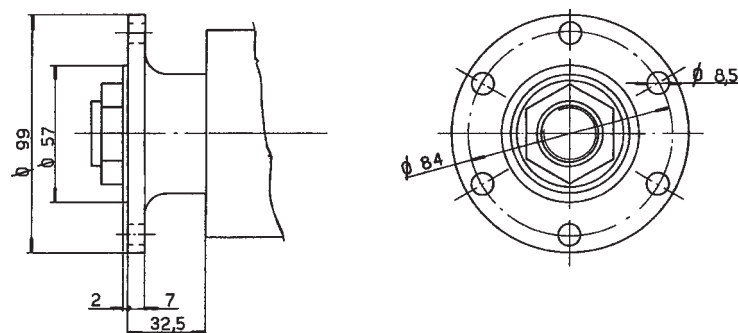
SPICER 1300 FLANGE CODE 1.16.01.010.00



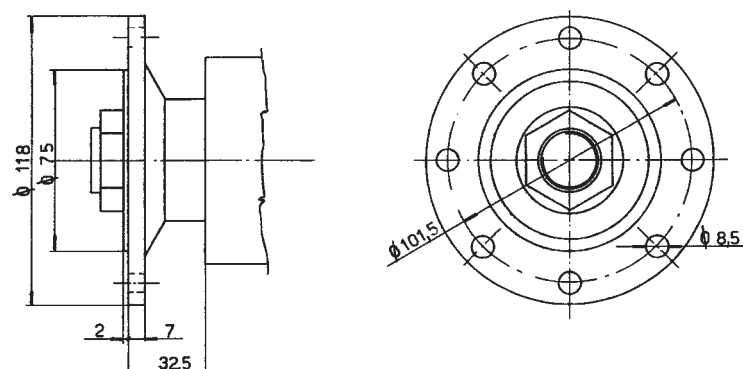
SPICER 1410 FLANGE CODE 1.16.01.025.00



DIN 10 FLANGE CODE 1.16.02.005.00

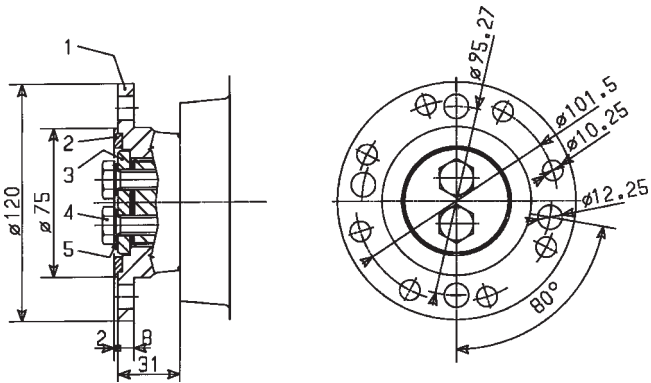


DIN 20 FLANGE CODE 1.16.02.006.00



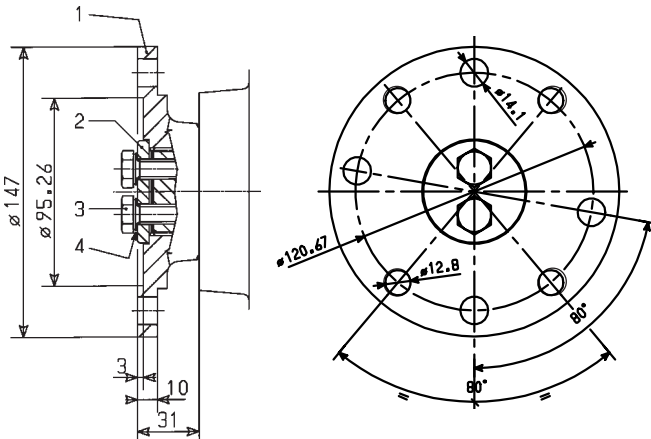
FLANGES FOR MAIN TRANSMISSION FOR 3.2.58.0 SPLIT-SHAFT UNIT ONLY

SPICER 1410/DIN 20 FLANGE KIT 2.05.374.0000



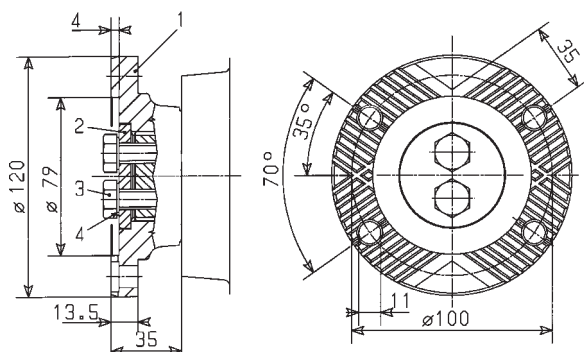
REF.	CODE	DESCRIPTION	QT.
1	1.16.04.010.00	Flange SPICER 1410/DIN 20	1
2	1.27.02.123.00	Centering ring	1
3	1.27.02.129.00	Washer	1
4	0.01.01.004.00	Capscrew TE M10x25 UNI 5739 CL RES 8.8	2
5	0.04.04.001.00	Lockwasher Schnorr 10	2

SPICER 1500/1510 FLANGE KIT 2.05.375.0000



REF.	CODE	DESCRIPTION	QT.
1	1.16.01.033.00	Flange SPICER 1500/1510	1
2	1.27.02.129.00	Washer	1
3	0.01.01.004.00	Capscrew TE M10x25 UNI 5739 CL RES 8.8	2
4	0.04.04.001.00	Lockwasher Schnorr 10	2

120 ISO 8667 FLANGE KIT 2.05.376.0000



REF.	CODE	DESCRIPTION	QT.
1	1.16.05.001.00	Flange 120 ISO 8667	1
2	1.27.02.129.00	Washer	1
3	0.01.01.004.00	Capscrew TE M10x25 UNI 5739 CL RES 8.8	2
4	0.04.04.001.00	Lockwasher Schnorr 10	2