



# HYDRAULIC COMPONENTS & POWER TAKE OFFS



## POWER TAKE OFF

# 3.2.92.8

FOR GEARBOX  
FULLER ratio 1:1

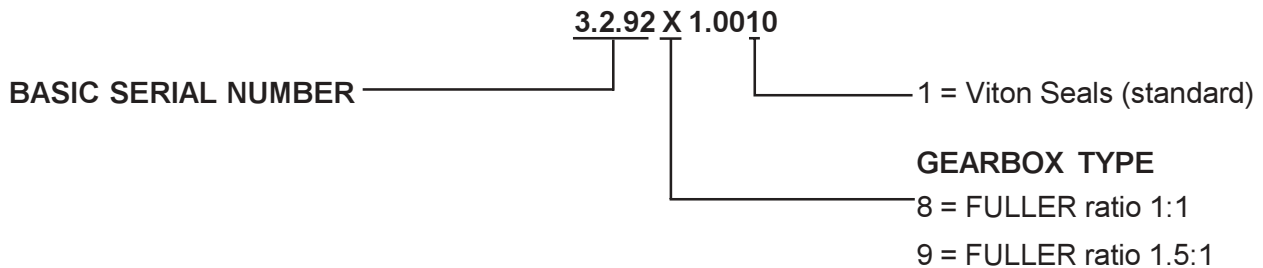
## POWER TAKE OFF

# 3.2.92.9

FOR GEARBOX  
FULLER ratio 1.5:1

Technical data: refer to transmission application manual

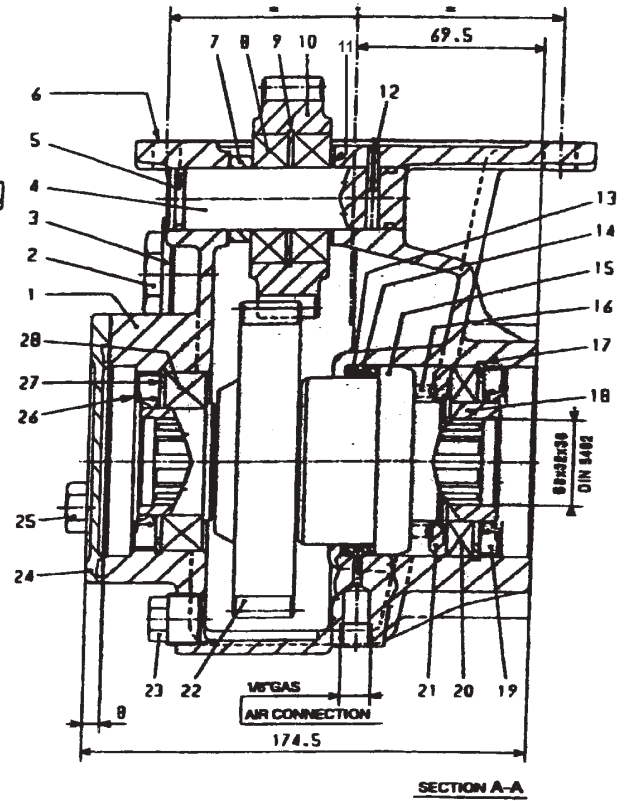
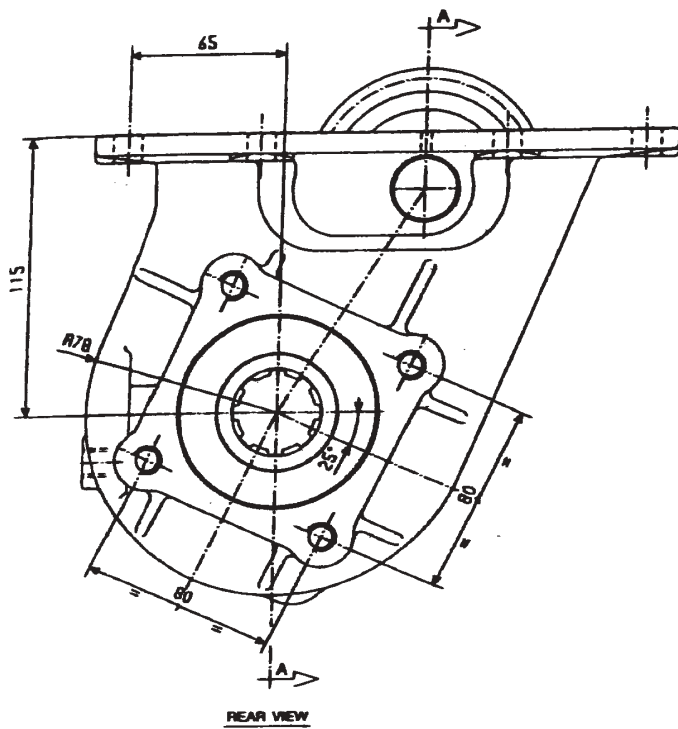
| POWER TAKE OFF | OUTPUT TORQUE | WEIGHT   |
|----------------|---------------|----------|
| 3.2.92.8       | Kgm 45        | 15.3 kg. |
| 3.2.92.9       | Kgm 40        | 15.3 kg. |



### OUTPUT SHAFT OPTION

### DESCRIPTION

|   |                   |
|---|-------------------|
| For remote transmission DIN 10/SPICER 1300 (see chart X group F)  | Kit 2.05.380.0000 |
| Direct mounting PZB Pumps 3 bolt mtg. flange (see chart Y type M) | Kit 2.05.324.0000 |
| Direct mounting ISO 4 bolt mtg. flange pumps (see chart Y type H) | Kit 2.05.087.0000 |



| REF | CODE           | DESCRIPTION  | QTY |
|-----|----------------|--------------|-----|
| 1   | 1.01.02.140.00 | Housing      | 1   |
| 2   | 0.12.01.047.00 | Plug         | 1   |
| 3   | 0.08.99.005.00 | Gasket       | 1   |
| 4   | 1.14.01.023.00 | Shaft        | 1   |
| 5   | 0.08.02.014.01 | VITON O-Ring | 2   |
| 6   | 1.29.01.021.00 | Gasket       | 1   |
| 7   | 1.26.01.061.00 | Spacer 7.8mm | 1   |
| 8   | 0.10.03.002.00 | Bearing      | 2   |
| 9   | 0.07.02.004.00 | Circlip      | 1   |
| 10  | 1.11.01.131.00 | Gear         | 1   |
| 11  | 0.04.01.128.00 | Spacer 0.3mm | 1   |
| 12  | 0.05.02.001.00 | Roll Pin     | 1   |
| 13  | 0.08.02.119.00 | VITON O-Ring | 2   |

| REF | CODE           | DESCRIPTION            | QTY |
|-----|----------------|------------------------|-----|
| 14  | 0.08.02.135.00 | Viton O-Ring           | 1   |
| 15  | 1.21.02.044.00 | Piston                 | 1   |
| 16  | 1.28.01.075.00 | Coil Spring            | 1   |
| 17  | 1.07.02.012.00 | Circlip                | 1   |
| 18  | 1.13.02.041.00 | Shaft                  | 1   |
| 19  | 0.08.01.095.00 | VITON Seal 50 x 80 x 8 | 1   |
| 20  | 0.10.01.046.00 | Bearing                | 1   |
| 21  | 1.26.01.090.00 | Ring                   | 1   |
| 22  | 1.11.07.144.00 | Gear (PTO 3.2.92.8)    | 1   |
|     | 1.11.07.145.00 | Gear (PTO 3.2.92.9)    |     |
| 23  | 0.12.01.002.00 | Drain Plug             | 1   |
| 24  | 1.24.01.095.00 | Cover                  | 1   |
| 25  | 0.01.01.081.00 | Capscrew TE            | 4   |
| 26  | 0.08.01.094.00 | VITON Seal 45 x 75 x 8 | 1   |
| 27  | 0.07.02.044.00 | Circlip                | 1   |
| 28  | 0.10.01.016.00 | Bearing                | 1   |

Please Note: Old housing p/n1010212900 will be replaced by p/n1010214000 with 2 x 1260110700