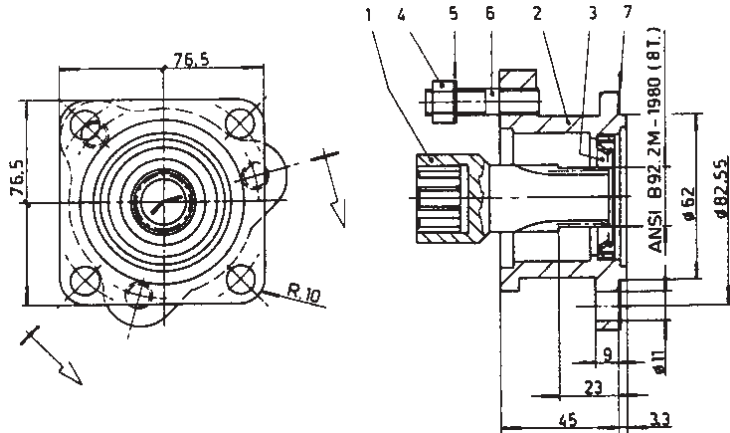




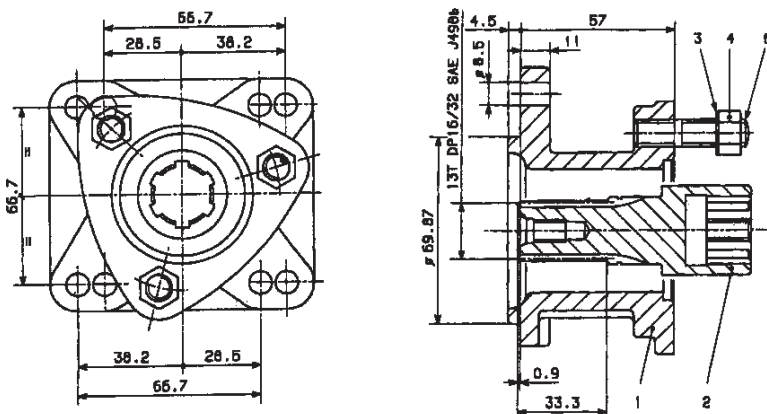
# HYDRAULIC COMPONENTS & POWER TAKE OFFS

## 3 BOLT ADAPTER KIT FOR POWAUTO PTO'S **2052410000**



| REF | CODE       | DESCRIPTION            | QTY |
|-----|------------|------------------------|-----|
| 1   | 1170205800 | Splined Sleeve         | 1   |
| 2   | 1070109800 | Flange                 | 1   |
| 3   | 0080107200 | Gasket 32 x 47 x 7     | 1   |
| 4   | 1300200100 | M10 Hex nut 14         | 3   |
| 5   | 1270101300 | Washer 16 x 10.5 x 1   | 3   |
| 6   | 0020201700 | Stud M10 x 28 UNI 5911 | 3   |
| 7   | 1290112100 | Gasket                 | 1   |

## 3 BOLT ADAPTER KIT FOR CHELSEA PTO'S **2053170000**



| REF | CODE       | DESCRIPTION            | QTY |
|-----|------------|------------------------|-----|
| 1   | 1070112900 | Flange                 | 1   |
| 2   | 1170205000 | Splined Sleeve         | 1   |
| 3   | 1270101300 | Washer 16 x 10.5 x 1   | 3   |
| 4   | 1300200100 | M10 Hex nut 14         | 3   |
| 5   | 0020201700 | Stud M10 x 28 UNI 5911 | 3   |