

**MFC LIGHT SERIES  
FRONT OF BODY**



**Features:**

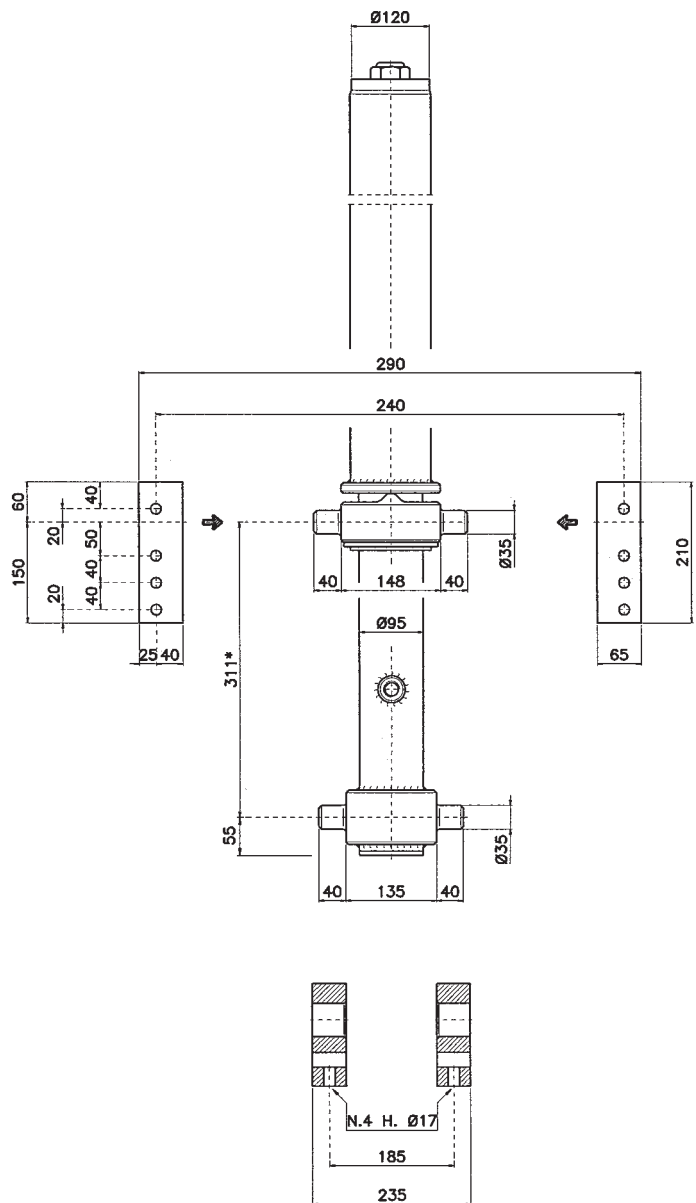
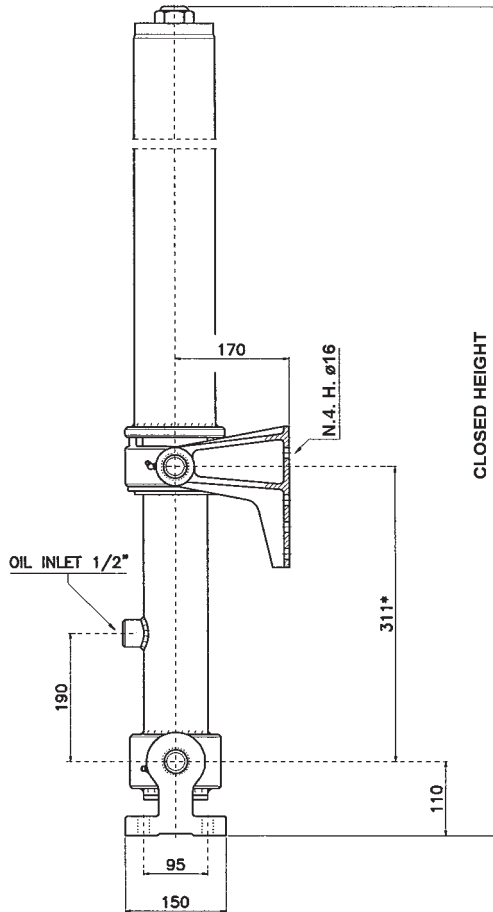
- ◆ Superior finish
- ◆ Long Life
- ◆ Chromed last stage
- ◆ High pressure capability

◆ Maximum lifting capacity calculated at 170 bar. All lifting capacities assume a free flowing load and a minimum tipping angle of 50°.

\* Measurement includes 20mm pullout for mounting of ram

MODEL	NO OF STAGES	LIFT (MM)	◆ LIFT CAPACITY (TONNES)	PIVOT LENGTH (MM)		OIL Lt.	WEIGHT Kg.	* CLOSED HEIGHT (MM)	STAGE DIAMETER (MM)				SEAL KIT
				47½° Tip	50° Tip				45	60	75	90	
MFC075-3-3000	3	3000	7	3700	3500	9	86	1332	●	●	●		SKCY025
MFC090-3-3375	3	3375	14	4150	3975	18	164	1501		●	●	●	SKCY026
MFC090-3-3675	3	3675	14	4550	4350	21	174	1601		●	●	●	SKCY026

MFC 075 FRONT OF BODY

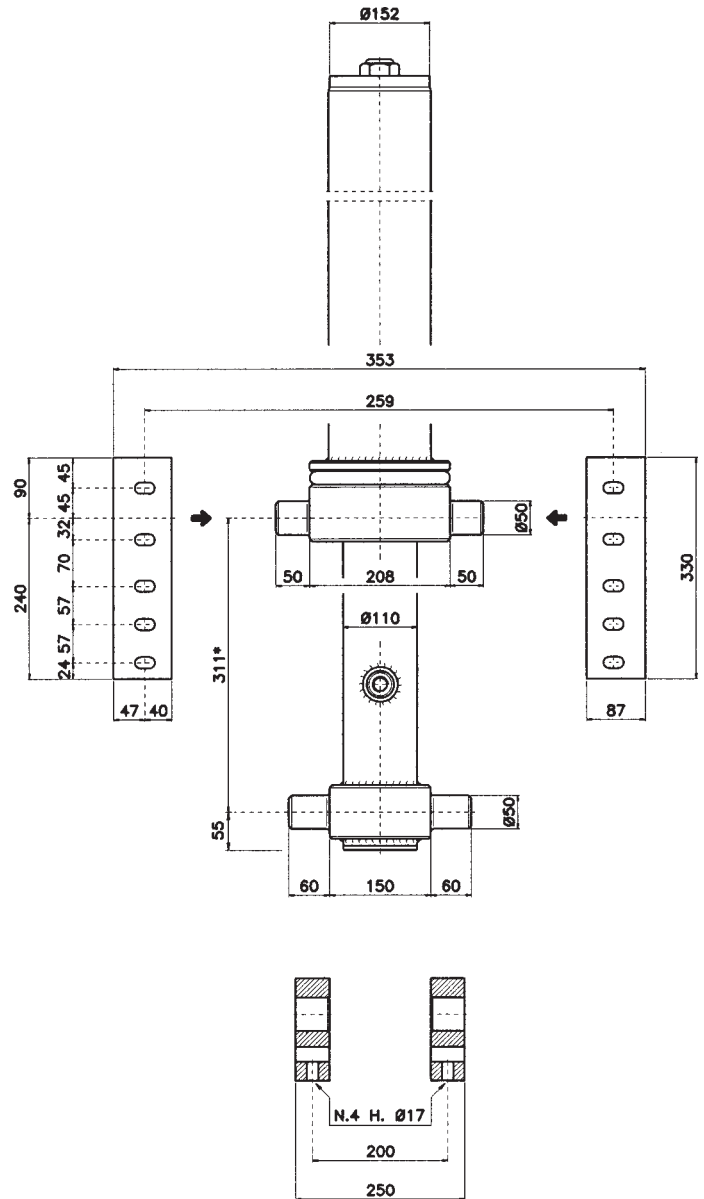
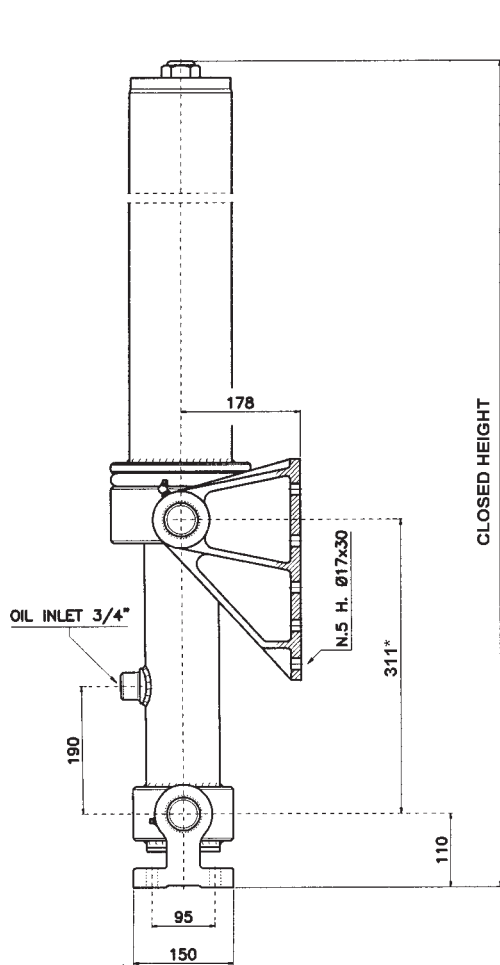




No. 1 in Transport Hydraulics



MFC 090 FRONT OF BODY



**MFC SERIES  
FRONT OF BODY**



**Features:**

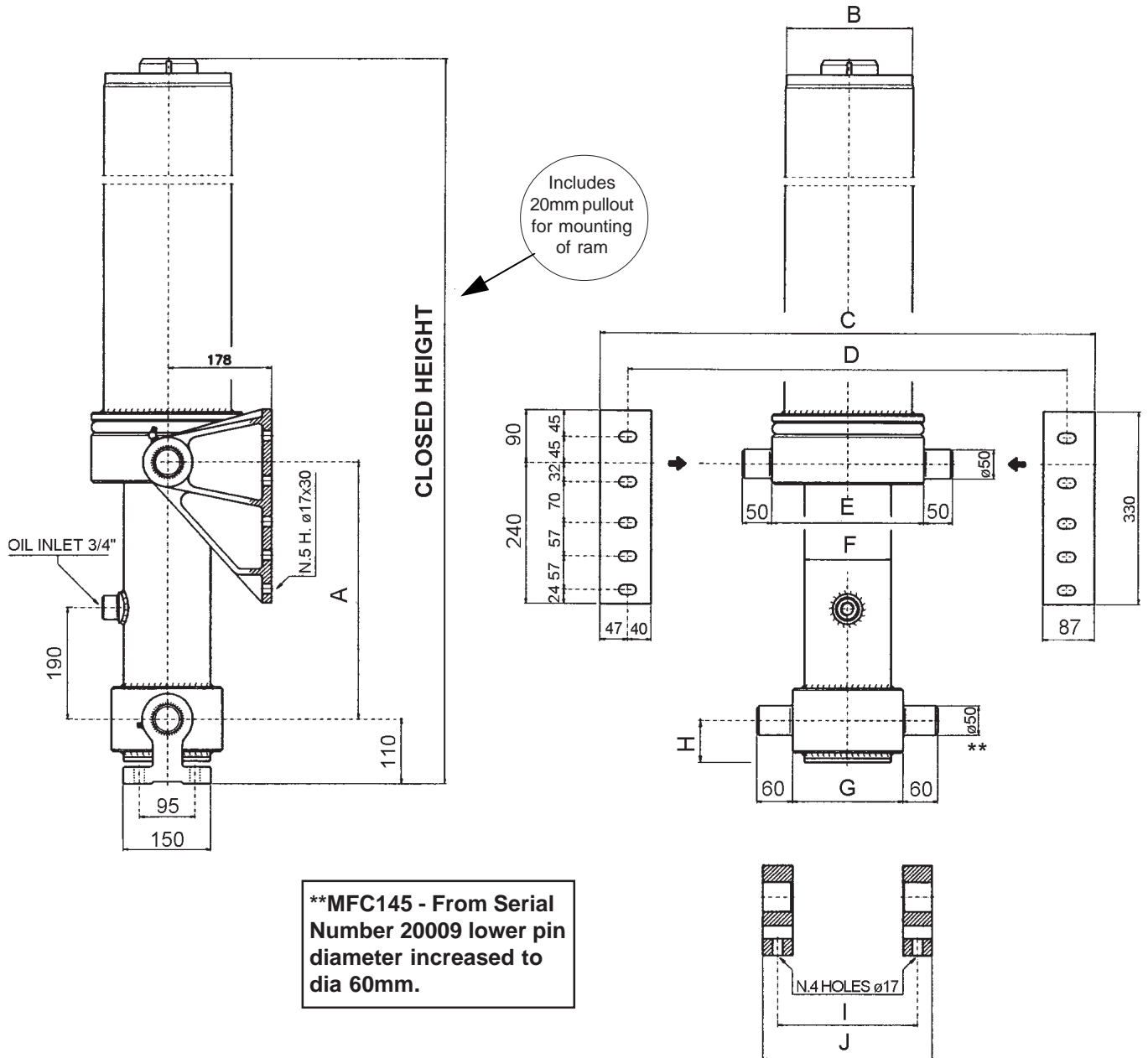
- ◆ Superior finish
- ◆ Long Life
- ◆ Chromed last stage
- ◆ High pressure capability

◆ Maximum lifting capacity calculated at 170 bar. All lifting capacities assume a free flowing load and a minimum tipping angle of 50°.

\* Measurement includes 20mm pullout for mounting of ram

MODEL	NO OF STAGES	LIFT (MM)	◆ LIFT CAPACITY	PIVOT LENGTH (MM)		OIL Lt.	WEIGHT Kg.	* CLOSED HEIGHT (MM)	STAGE DIAMETER (MM)										SEAL KIT	
				47½° Tip	50° Tip				60	69	76	88	92	107	108	126	145	165		
MFC107-3-2475	3	2475	18	3095	2950	19	161	1462		●		●		●						SKCY027
MFC107-3-3375	3	3375	18	4220	4020	20	170	1578		●		●		●						SKCY027
MFC107-3-3675	3	3675	18	4595	4300	23	181	1678		●		●		●						SKCY027
MFC107-3-4230	3	4230	18	5250	4990	27	200	1878		●		●		●						SKCY027
MFC108-4-4300	4	4300	18	5350	5125	25	190	1510	●		●		●		●					SKCY040
MFC126-4-3460	4	3460	24	4295	4095	27	209	1267		●		●		●		●				SKCY030
MFC126-4-3780	4	3780	24	4695	4475	30	222	1367		●		●		●		●				SKCY030
MFC126-4-4700	4	4700	24	5835	5560	37	255	1617		●		●		●		●				SKCY030
MFC126-4-5100	4	5100	24	6330	6035	40	268	1717		●		●		●		●				SKCY030
MFC145-4-3780	4	3780	30	4695	4475	42	240	1367				●		●		●	●			SKCY032
MFC145-5-4725	5	4725	26	5900	5600	45	262	1371		●		●		●		●	●			SKCY032
MFC145-5-5125	5	5125	26	6405	6100	49	280	1471		●		●		●		●	●			SKCY032
MFC145-5-5625	5	5625	26	7030	6690	54	294	1571		●		●		●		●	●			SKCY032
MFC165-4-5840	4	5840	40	7250	6910	87	422	1922						●		●	●	●		SKCY017

MFC 107 MFC108 MFC126 MFC145 FRONT OF BODY



**\*\*MFC145 - From Serial Number 20009 lower pin diameter increased to dia 60mm.**

MODEL	A	B	C	D	E	F	G	H	I	J
MFC107/108	311	152	353	259	208	130	170	55	220	270
MFC126/145	343	219	405	311	260	149	190	72	240	290

MFC165 FRONT OF BODY

